

Palodent® Plus vs. Garrison Composi-Tight® 3D / 3D XR

The Garrison Sectional 3D XR Matrix System includes one 3D XR and two 3D Matrix Rings. This was launched in 2008, following the very successful launch of the Triodent® V3.



The Composi-Tight® 3D ring is “a stainless steel ring with Soft Face technology”* introduced in 2008 in response to the successful Triodent® V3 Ring, which is identical to Palodent® Plus Ring.

In 2012 the Composi-Tight® 3D XR ring was released to “eliminate ring “spring-off” with short teeth and difficult dentition”*.

In comparison, the Palodent® Plus ring is a super elastic NiTi ring with glass fibre reinforced plastic tines that has wide applications for use, is exceptionally stable during and after placement, extremely easy to use and is among the simplest and most accurate matrix solutions on the market.

Better Outcomes start here with Palodent® Plus

Palodent® Plus

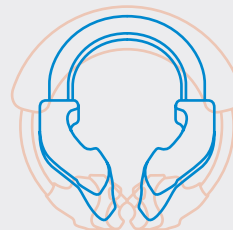
- Small footprint around the restoration area
- Tines engage at the gingival margin
- Tines don't push the matrix into the embrasure
- Glass fibre reinforced Tines
- NiTi for spring strength and consistent tooth separation
- Easy to double wedge
- Two Rings cover a wide range of embrasures
- Wide tines engage the gingival zone of significantly damaged teeth which eliminates the need for buccal lingual build up before ring placement which is required with Garrison Rings if a cusp is missing



“Size does matter.

Bigger Garrison ring is harder to separate and open wide enough for placement in some areas.”

Timothy M. Bizga, DDS



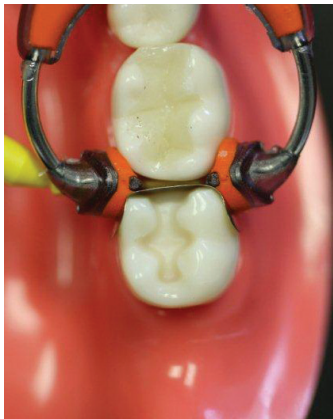
Actual ring sizes



* <https://garrisdental.com/en/about-garrison>

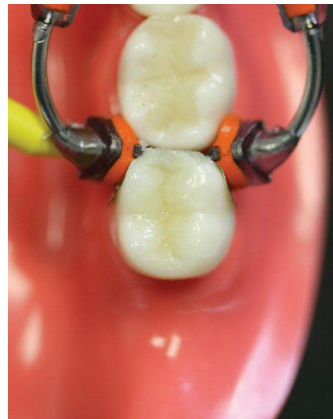
Palodent® Plus vs. Garrison Composit-Tight® 3D

Indent in restoration



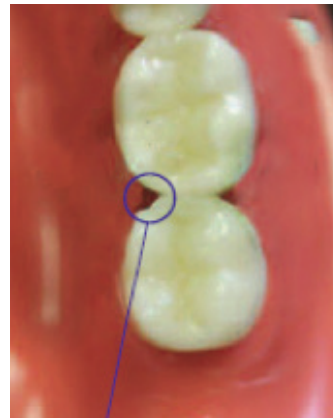
Garrison system Placement

Hard point on Composit-Tight® 3D ring tines forces matrix to impinge on proximal line angle of wide preps



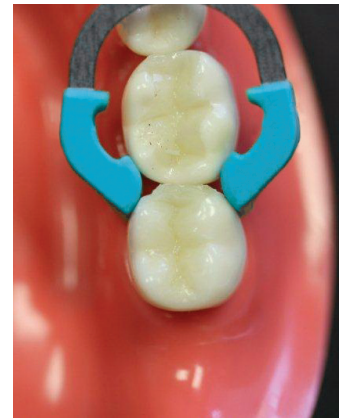
Composite placement using Garrison system

Line angle impingement causes an indent in the restoration, preventing full anatomical contour



Garrison system removed

Garrison system removed, indent in restoration exposed



Palodent® Plus ring on tooth restored using Garrison system

The curvature of Palodent® Plus ring tines eliminates interference with the proximal line angle

Palodent® Plus Summary

- Rings are sized for easy placement in the mouth
- Tines engage the gingival zone of significantly damaged teeth
- Nickel Titanium Ring provides consistent resistance and separating force
- The curvature of the Palodent® Plus ring tines eliminates interference with the proximal line angle
- Ability to wedge simultaneously from buccal and lingual
- Ability to stack wedges
- WedgeGuard protects adjacent tooth during preparation and turns into a wedge in one simple step

Key Palodent® Plus advantages:

- Performance on significantly damaged teeth
- Tine design avoids interference with proximal line angle (indent)
- Ring size and shape
- Stacking of Wedges
- WedgeGuard 2 in 1 product

Composit-Tight® 3D is not a registered trademark of Dentsply Sirona.

ML590002F (9/7/17)