

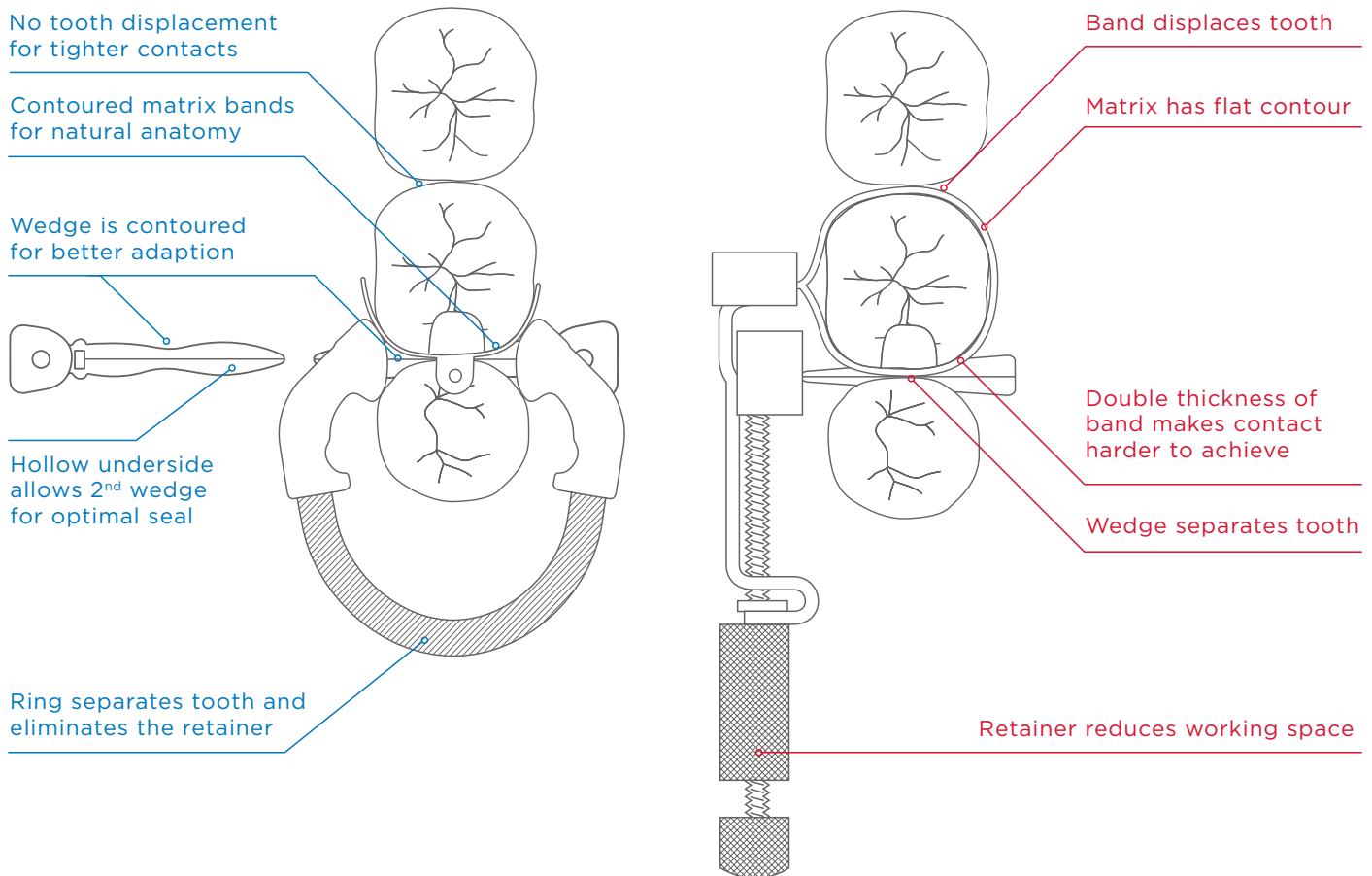
Palodent® Plus

Sectional Matrix System

vs. Tofflemire™ and comparable circumferential matrix devices

The Tofflemire circumferential matrix band was developed in the 1940s to aid placement of dental amalgam. It was not designed with today's modern restorative materials in mind, which can result in less than optimal outcomes when placing composites.

In contrast, sectional matrix systems were developed specifically for placing composite materials. Palodent® Plus delivers predictable, tight contacts and accurate anatomy, whilst minimizing the requirement for time-consuming finishing and is extremely easy to use.

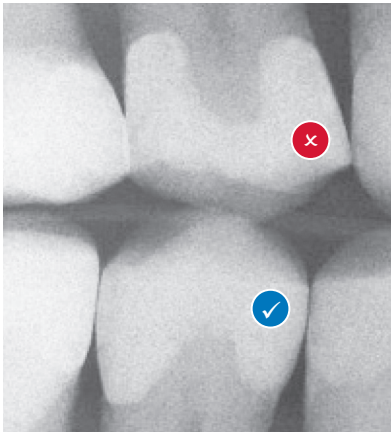


Drawings are not to scale

Palodent[®] Plus

Sectional Matrix System

vs. Tofflemire[™] and comparable circumferential matrix devices



Poor interproximal contact achieved with a Tofflemire matrix system

Proper interproximal contact achieved with a Sectional matrix system

Tofflemire[™] System

Fails to restore proper proximal anatomy

Thin contact at the marginal ridge can result in food trap below

Loose contacts likely

Bands create straight line angles

Difficult to achieve isolation

Forced wedging can initiate gingival bleeding

Poor marginal seal can result in excessive flash

Limited visibility and patient discomfort due to bulky retainer

Thin, high contact points can make stress fracture more likely

Designed for amalgam materials, not ideal for composite materials

Bulky retainer can limit access to restoration site and can impede the patient comfort

All data on file. Tofflemire is not a registered trademark of Dentsply Sirona
©2017 Dentsply Sirona. All rights reserved. ML590003F (08/14/17)

